



MULTIBARREL INLET FILTER SILENCERS

High Airflow Applications

"MBFS" Series

APPLICATIONS & EQUIPMENT

- Industrial & Severe Duty
- Centralized Air Intakes
- Centrifugal Blowers
- Piston Compressors
- Screw Compressors
- Centrifugal Compressors
- Fans
- Food Industry
- Pneumatic Conveying
- Waste Water Aeration
- Cement
- Power Plants
- Factory Air

FEATURES & SPECIFICATIONS

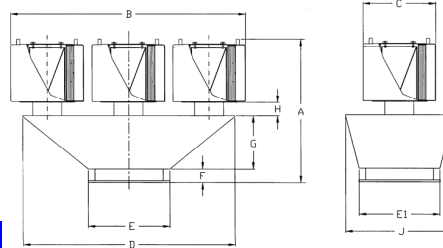
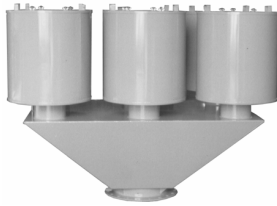
- Inlet Filter Silencers mounted on trapezoid manifold base
- Cartridge style elements provide:
 - Increased reliability-better positive seal than panel filters
 - Added efficiency with maximum surface area
- Polyester: 99%+ removal efficiency standard to 5 micron
- Paper: 99%+ removal efficiency standard to 2 micron
- Trapezoid manifold provides low pressure drop
- Versatility: Bottom or side outlets
- Tubular silencing design - tube is positioned to maximize attenuation and air flow while minimizing pressure drop
- Durable carbon steel construction with baked enamel finish
- Several element sizes available per given connection
- Temp (continuous): min -15°F (-26°C) max 220°F (104°C)
- Filter change out differential: 10"-15" H₂O over initial delta P

OPTIONS (Inquiries Encouraged)

- Various media available
- Box manifold base with side outlet
- Support Stands
- Available in **Stainless Steel**
- Epoxy coated housings
- Special connections
- Filter Silencer and Exposed Element Filter Configurations

CONFIGURATION

DRAWING



Dimension Tolerance ± 1/8"

I = Industrial Duty S = Severe Duty E = Extreme Duty

	with Polyester Element	Flange Outlet	DIMENSIONS - inches									Rated Flow SCFM	Approx. Wt. lbs
			A	B	C	D	E & E1	F	G	H	J		
E	MBFS2B-485P-1400F	14"	45	61	28 1/2	48	22	4	10	6	22	5200	510
S	MBFS2B-685P-1600F	16"	52	61	28 1/2	48	22	4	10	6	22	6800	600
S	MBFS2B-485P(2)-1800F	18"	67	61	28 1/2	48	22	4	10	6	22	8800	625
S	MBFS4B-685P-2000F	20"	52	61	61	48	30	4	10	6	48	11000	1100
S	MBFS4B-685P-2200F	22"	52	61	61	48	30	4	10	6	48	13500	1150
S	MBFS4B-485P(2)-2400F	24"	67	61	61	48	30	4	10	6	48	16000	1300
S	MBFS6B-685P-2600F	26"	66	93 1/2	61	80	36	4	24	6	48	18800	1650
S	MBFS6B-685P-2800F	28"	66	93 1/2	61	80	36	4	24	6	48	21000	1750
S	MBFS6B-485P(2)-3000F	30"	81	93 1/2	61	80	36	4	24	6	48	25000	1850

	with Paper Element	Flange Outlet	A	B	C	D	E & E1	F	G	H	J	Rated Flow SCFM	Approx. Wt. lbs
E	MBFS2B-484P-1400F	14"	45	61	28 1/2	48	22	6	10	6	22	5200	510
S	MBFS2B-484P-1600F	16"	45	61	28 1/2	48	22	6	10	6	22	6800	550
S	MBFS2B-384P(2)-1800F	18"	52	61	28 1/2	48	22	6	10	6	22	8800	600
S	MBFS4B-384P-2000F	20"	37	61	61	48	30	6	10	6	48	11000	975
S	MBFS4B-484P-2200F	22"	45	61	61	48	30	6	10	6	48	13500	1000
S	MBFS4B-484P-2400F	24"	45	61	61	48	30	6	10	6	48	16000	1150
S	MBFS6B-484P-2600F	26"	59	61	61	48	30	6	24	6	48	18800	1300
S	MBFS6B-484P-2800F	28"	59	93 1/2	61	80	36	6	24	6	48	21000	1550
S	MBFS6B-484P-3000F	30"	59	93 1/2	61	80	36	6	24	6	48	25000	1700

